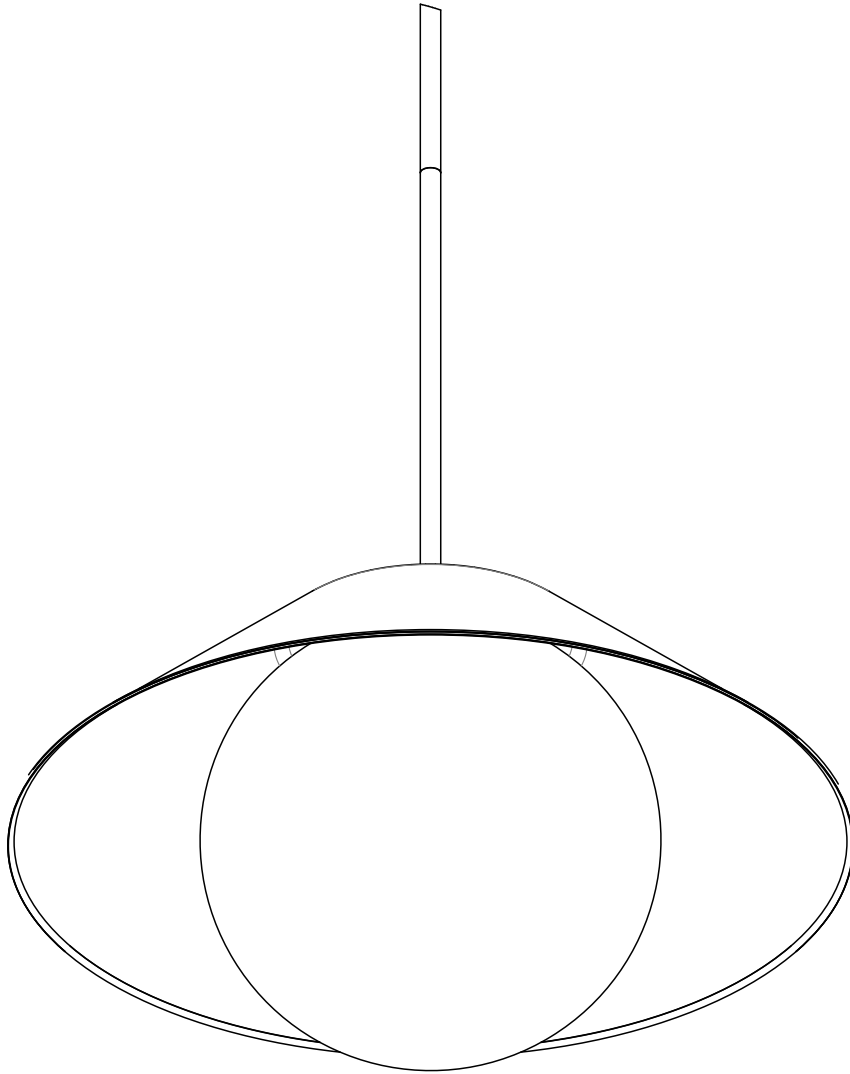


Akoya

16734 rC

Low Voltage Input



CAUTION:

Before starting, turn off power at main circuit panel.

ADVERTENCIA:

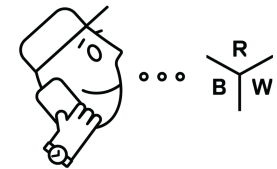
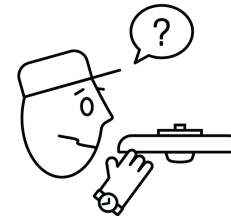
Antes de comenzar la instalación, apague la corriente en el tablero principal.

ATTENTION:

Coupez l'alimentation avant de procéder à l'installation.



Calling for backup? Scan above to contact our team.



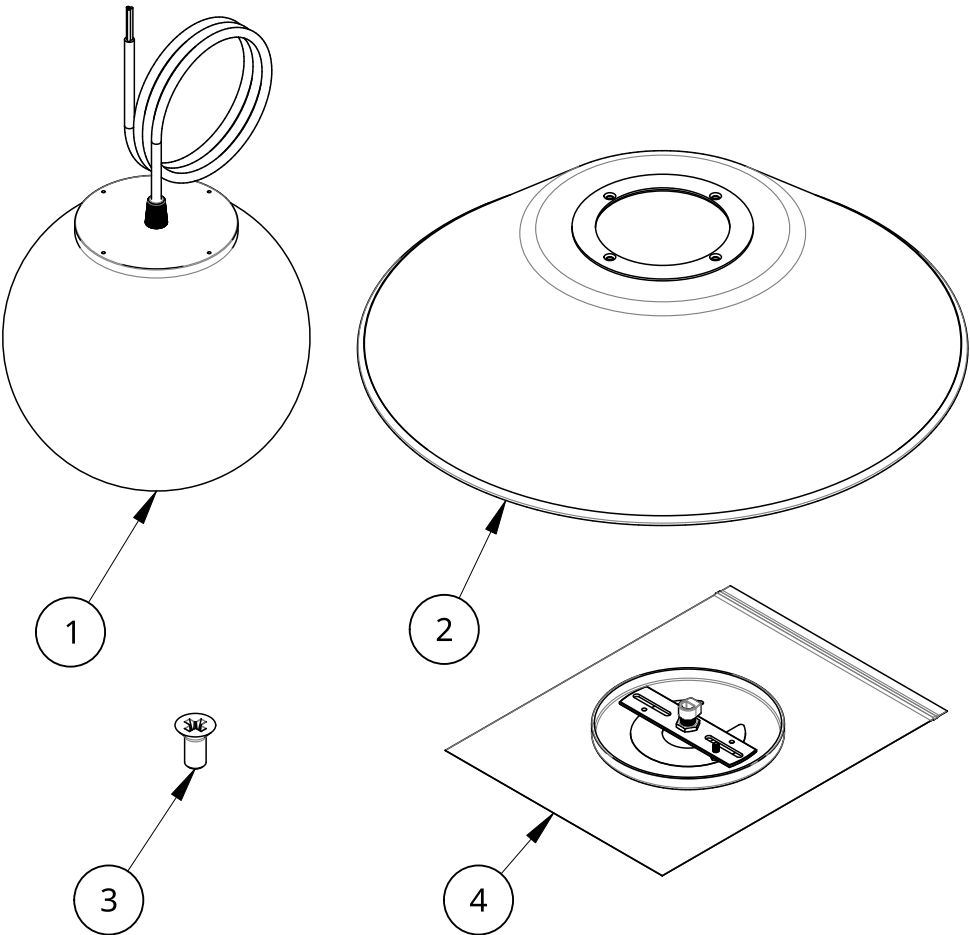
www.RBW.com

+1 212 388 0399

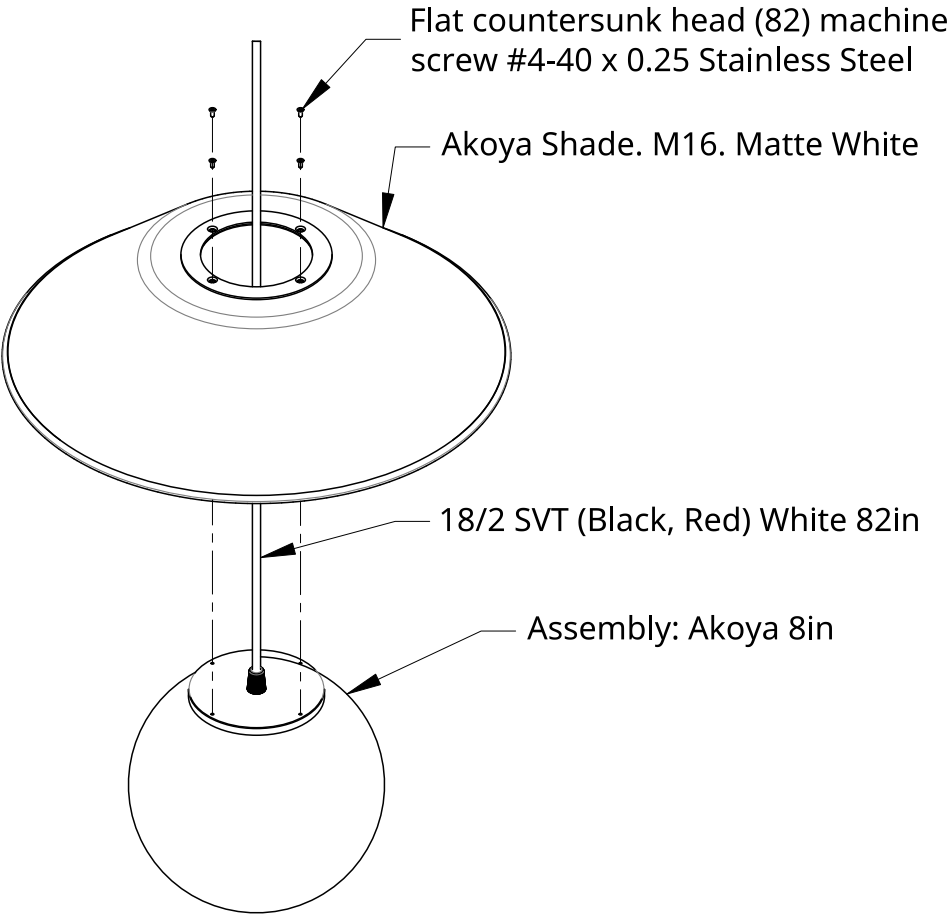
support@RBW.com

© RBW Studio LLC, 2013, 2020

* If M22 See Install Steps on Pages 3-4



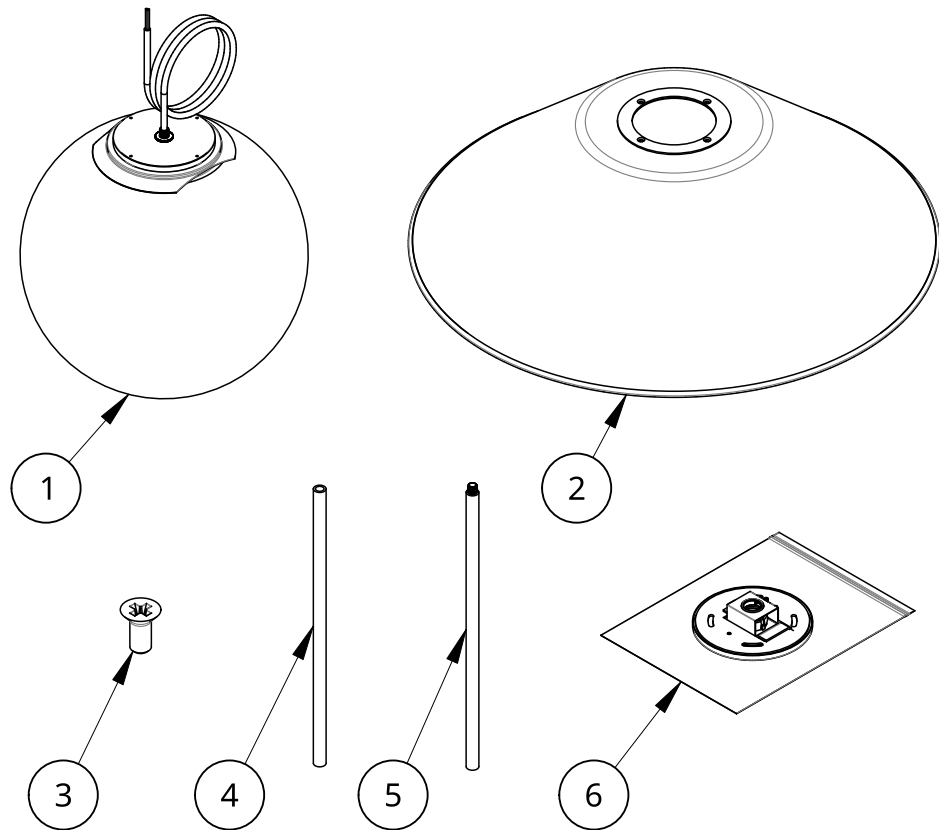
Item	Qty	Part number	Description
1	1	15570-27	Assembly: Akoya 8in. 2700K. 82in White Cord.
2	1	12242-PC20	Akoya Shade. M16. Matte White
3	4	90273A106	Flat countersunk head (82) machine screw #4-40 x 0.25 Stainless Steel
4	1	15045	Package: Akoya Flat Round Cord Suspension. UL 2108. White



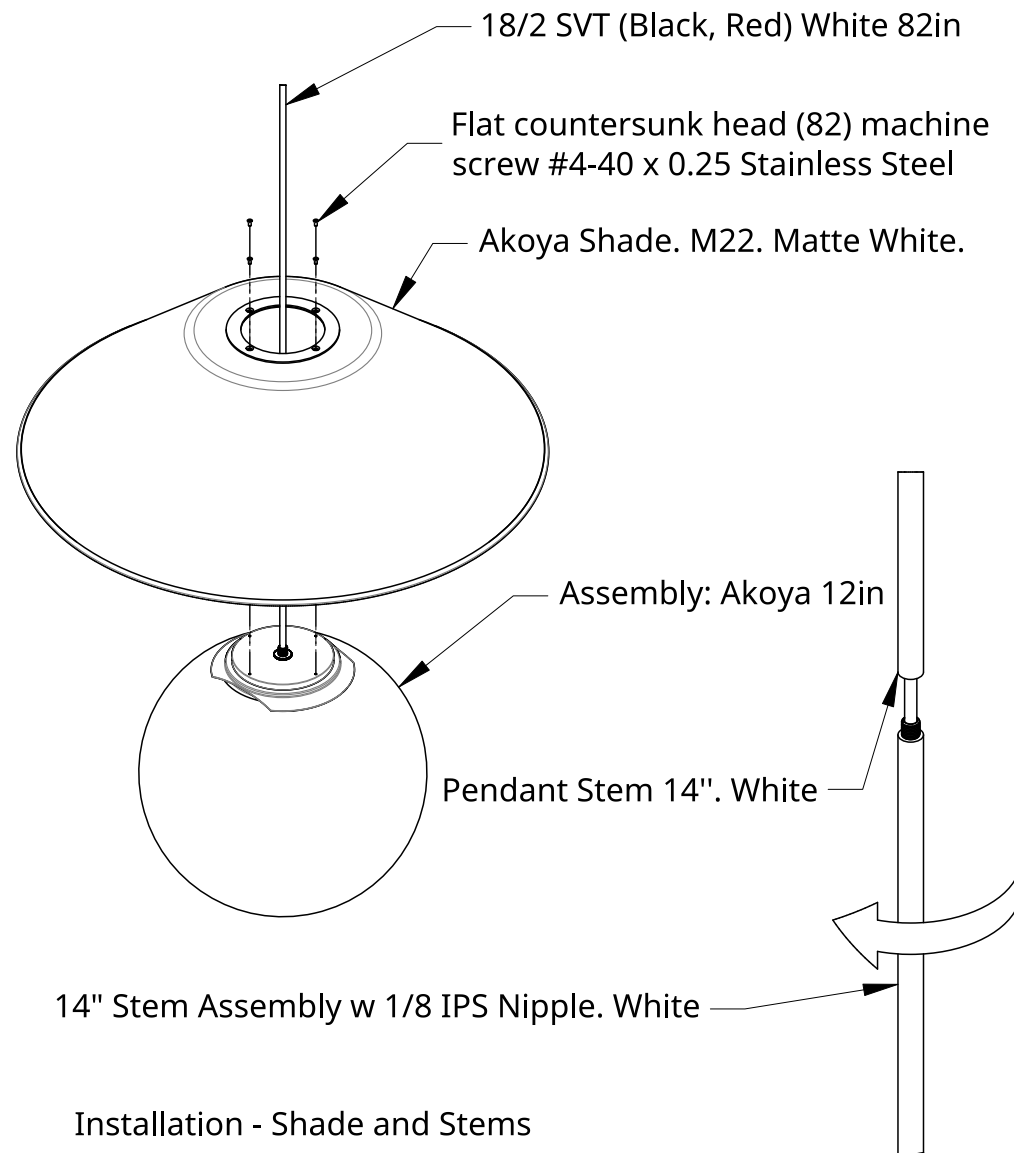
Installation - Shade

1. Pass SVT Power Cord through center hole of Akoya Shade.
2. Secure Akoya Shade to Akoya Assembly using #4-40 Screws.

See Canopy Install Instructions 16772 for information on ceiling canopy installation.

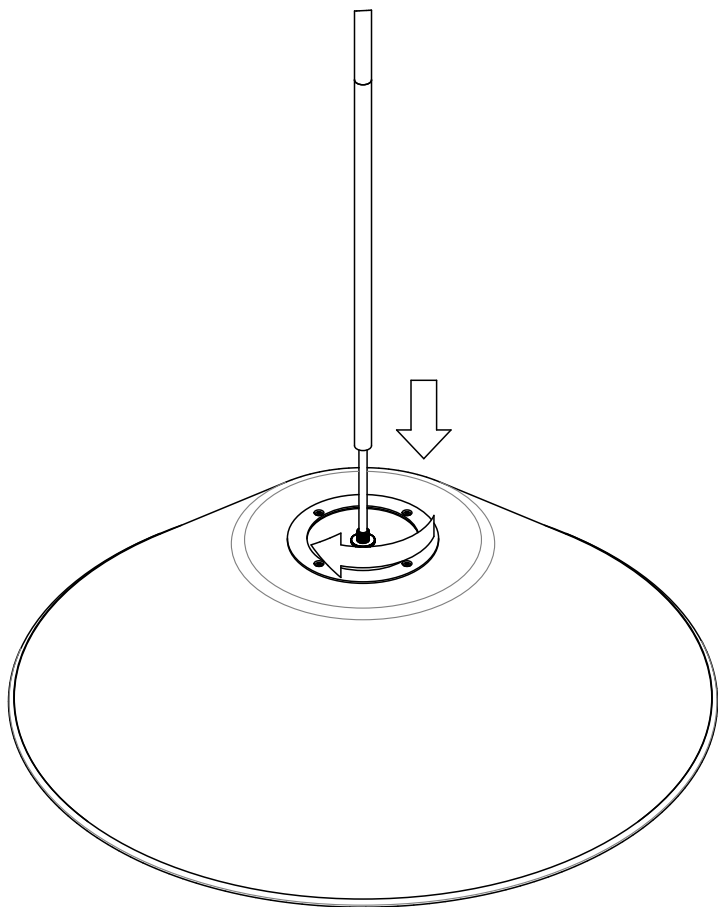


Item	Qty	Part number	Description
1	1	15571-27	Assembly: Akoya 12in. 2700K. 82in White Cord.
2	1	12243-PC20	Akoya Shade. M22. Matte White.
3	4	90273A106	Flat countersunk head (82) machine screw #4-40 x 0.25 Stainless Steel
4	1	11085-PC20	Pendant Stem 14". White
5	1	10311-PC20	14" Stem Assembly w 1/8 IPS Nipple. White
6	1	12540-PC20	Package: Flat Round ADJ Canopy Kit. UL 2108. Matte White



Installation - Shade and Stems

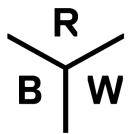
1. Pass SVT Power Cord through center of Akoya Shade
2. Secure Akoya Shade to Akoya Assembly using #4-40 Screws.
3. Pass SVT Power Cord through Stem Assembly w/ 1/8 IPS Nipple and Pendant Stem.
4. Thread Pendant Stem onto 1/8 IPS Nipple of Stem Assembly.



Installation - Stems

5. Lower Stems onto Akoya Assembly and fasten to 1/8 IPS Nipple.
6. Congratulations! End of guide.

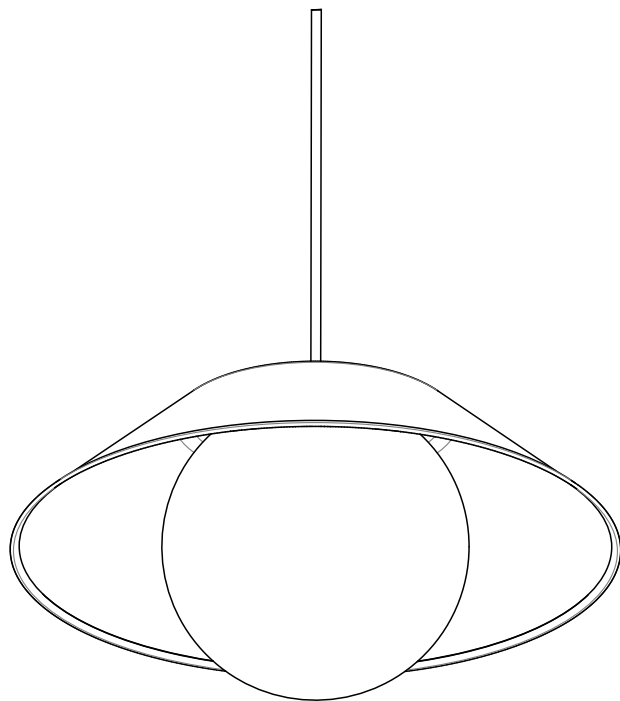
See Canopy Install Instructions 19624 for information on ceiling canopy installation.



Akoya

12435 rC

AC Input



CAUTION:

Before starting, turn off power at main circuit panel.

ADVERTENCIA:

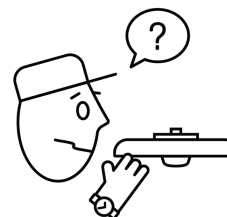
Antes de comenzar la instalación, apague la corriente en el tablero principal.

ATTENTION:

Coupez l'alimentation avant de procéder à l'installation.



Calling for backup? Scan above to contact our team.



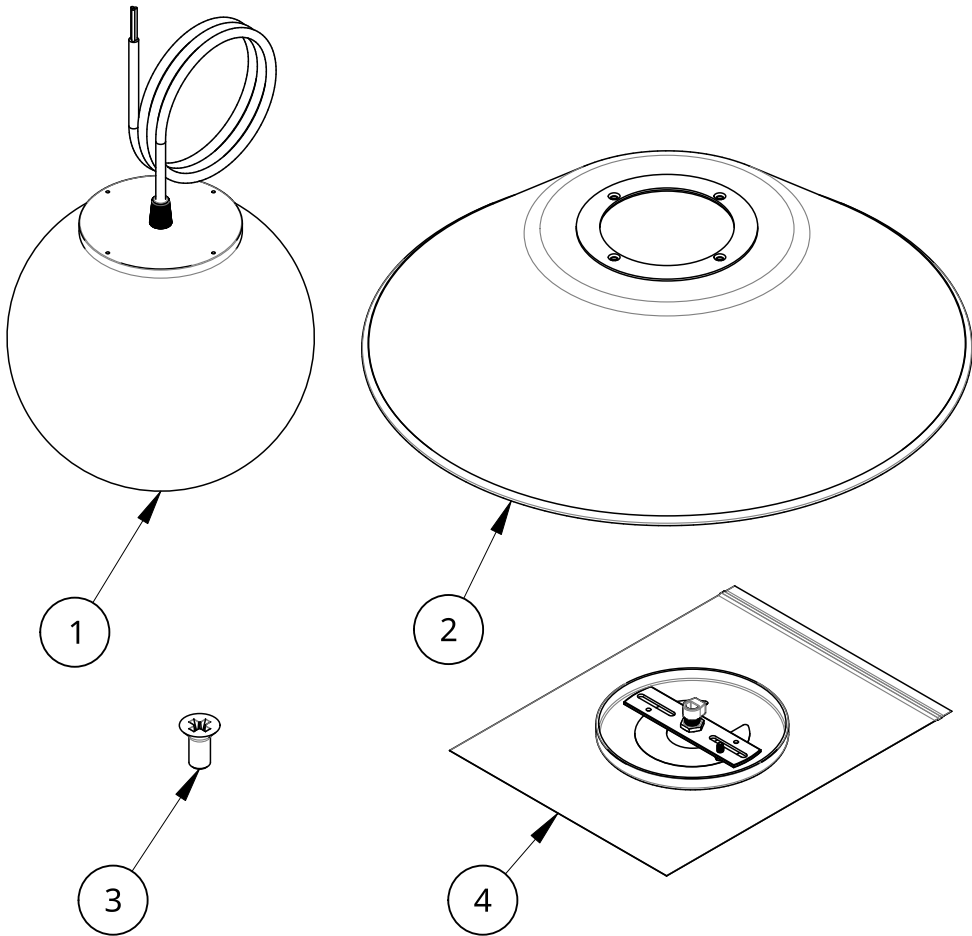
www.RBW.com

+1 212 388 0399

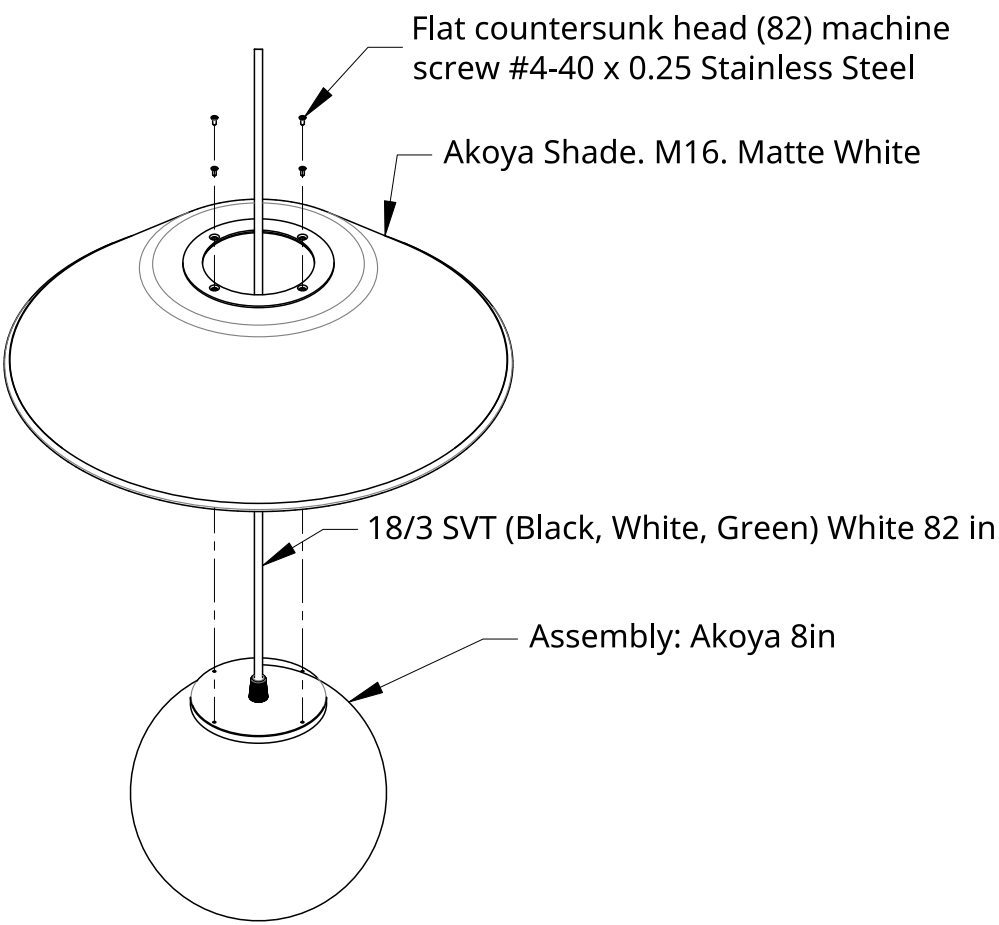
support@RBW.com

© RBW Studio LLC, 2013, 2020

* If M22 See Install Steps on Pages 3-4



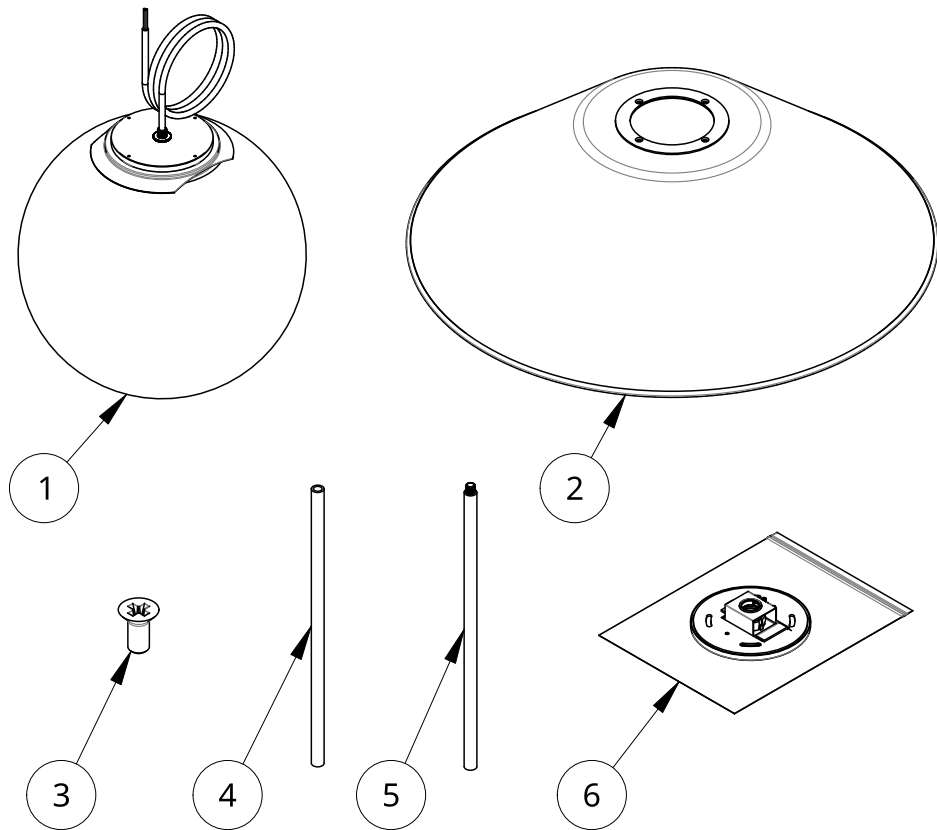
Item	Qty	Part number	Description
1	1	14936-27	Assembly: Akoya 8in. 2700K. 82in White Cord.
2	1	12242-PC20	Akoya Shade. M16. Matte White
3	4	90273A106	Flat countersunk head (82) machine screw #4-40 x 0.25 Stainless Steel
4	1	15033	Package: Akoya Flat Round Cord Suspension. UL 1598. White



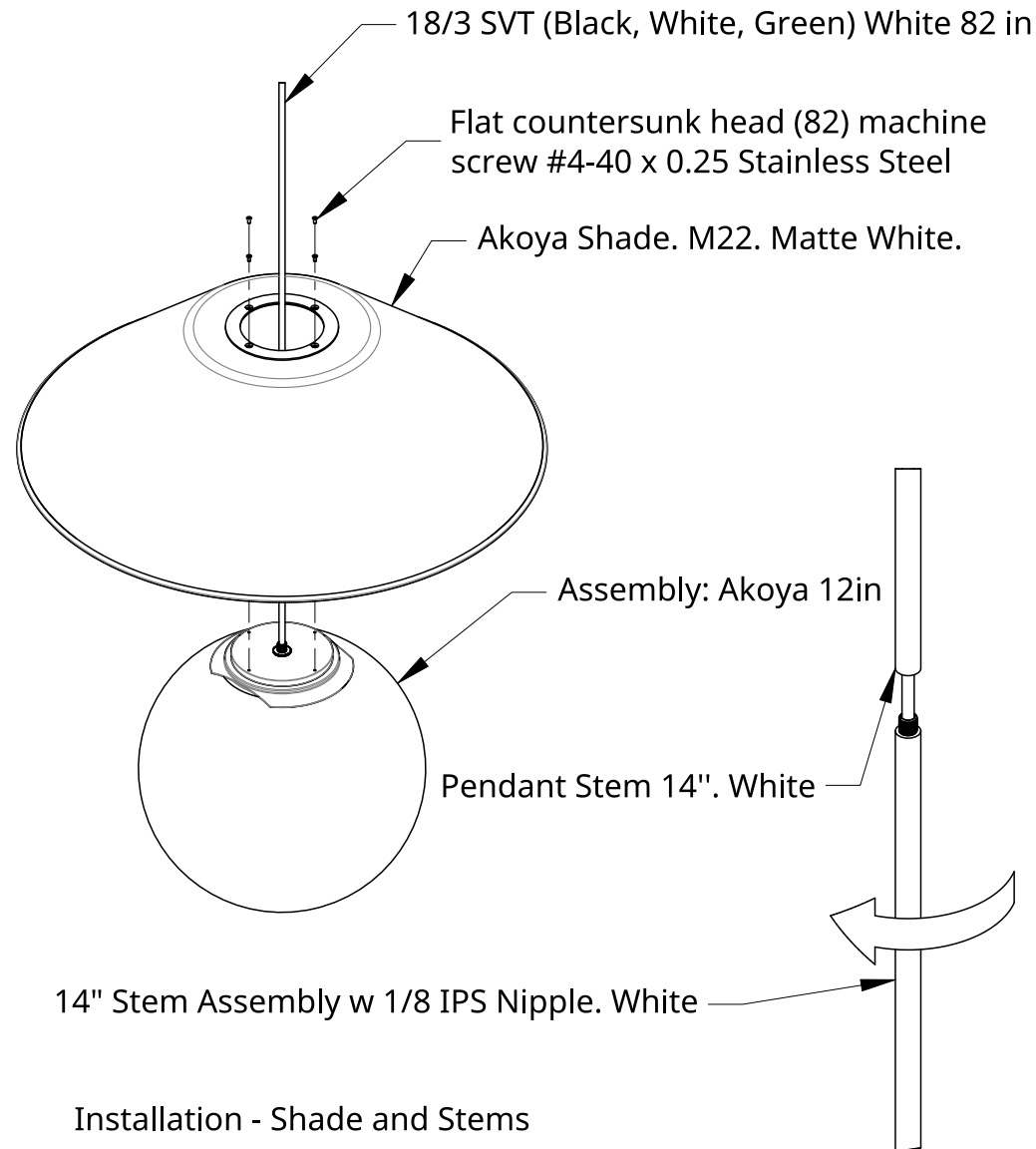
Installation - Shade

1. Pass SVT Power Cord through center hole of Akoya Shade.
2. Secure Akoya Shade to Akoya Assembly using #4-40 Screws.

See Canopy Install Instructions 15675 for information on ceiling canopy installation.

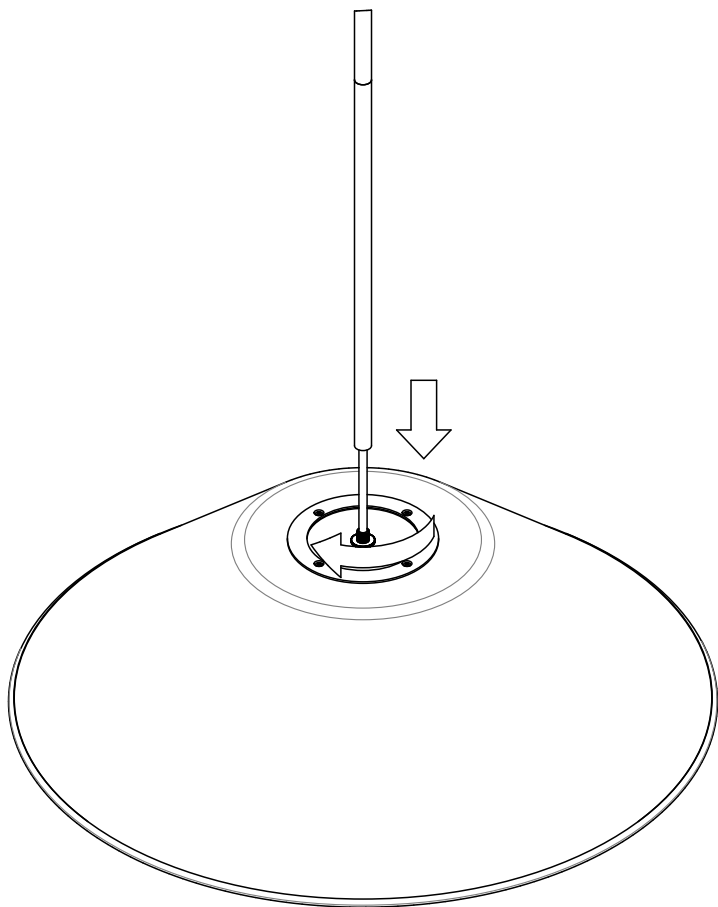


Item	Qty	Part number	Description
1	1	15571-27	Assembly: Akoya 12in. 2700K. 82in White Cord.
2	1	12243-PC20	Akoya Shade. M22. Matte White.
3	4	90273A106	Flat countersunk head (82) machine screw #4-40 x 0.25 Stainless Steel
4	1	11085-PC20	Pendant Stem 14". White
5	1	10311-PC20	14" Stem Assembly w 1/8 IPS Nipple. White
6	1	12540-PC20	Package: Flat Round ADJ Canopy Kit. UL 2108. Matte White



Installation - Shade and Stems

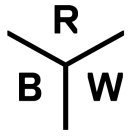
1. Pass SVT Power Cord through center of Akoya Shade
2. Secure Akoya Shade to Akoya Assembly using #4-40 Screws.
3. Pass SVT Power Cord through Stem Assembly w/ 1/8 IPS Nipple and Pendant Stem.
4. Thread Pendant Stem onto 1/8 IPS Nipple of Stem Assembly.



Installation - Stems

5. Lower Stems onto Akoya Assembly and fasten to 1/8 IPS Nipple.
6. Congratulations! End of guide.

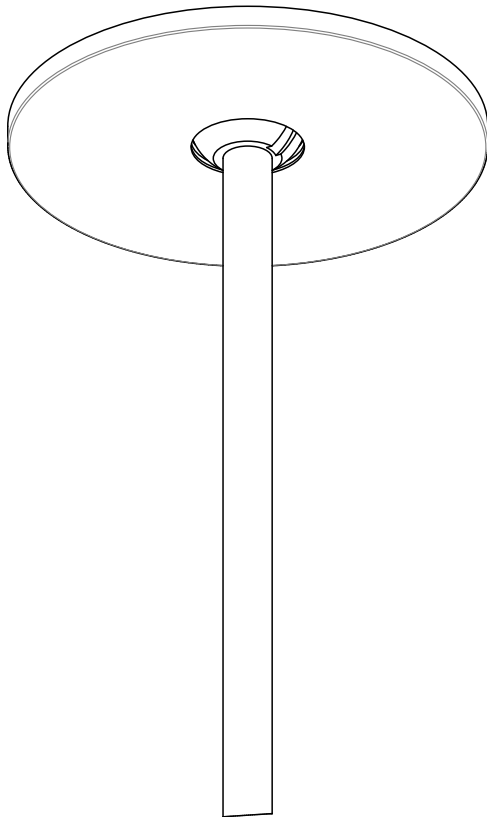
See Canopy Install Instructions 13073 for information on ceiling canopy installation.



Flat Canopy

19624 rA

Round
Adjustable Stem
Low Voltage



CAUTION:

Before starting, turn off power
at main circuit panel.

ADVERTENCIA:

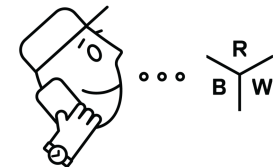
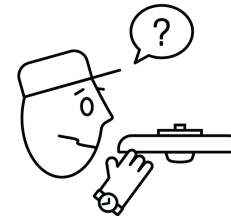
Antes de comenzar la instalación,
apague la corriente en el tablero
principal.

ATTENTION:

Coupez l'alimentation avant de
procéder à l'installation.



Calling for backup? Scan above
to contact our team.

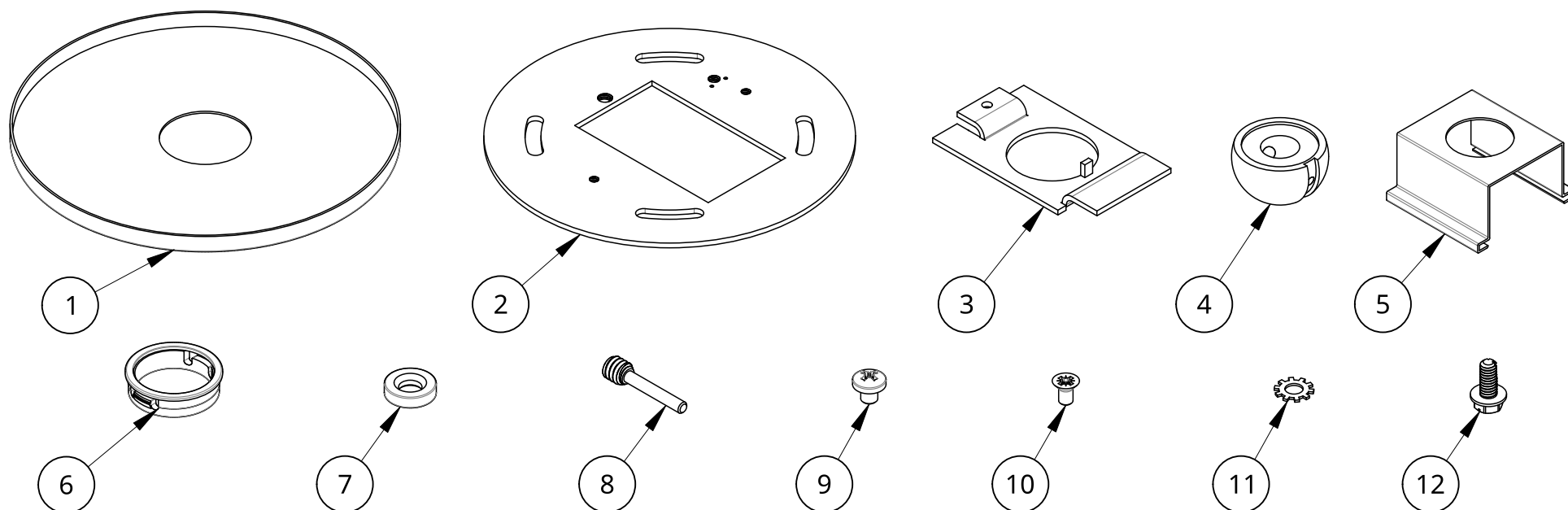


www.RBW.com

+1 212 388 1621

support@RBW.com

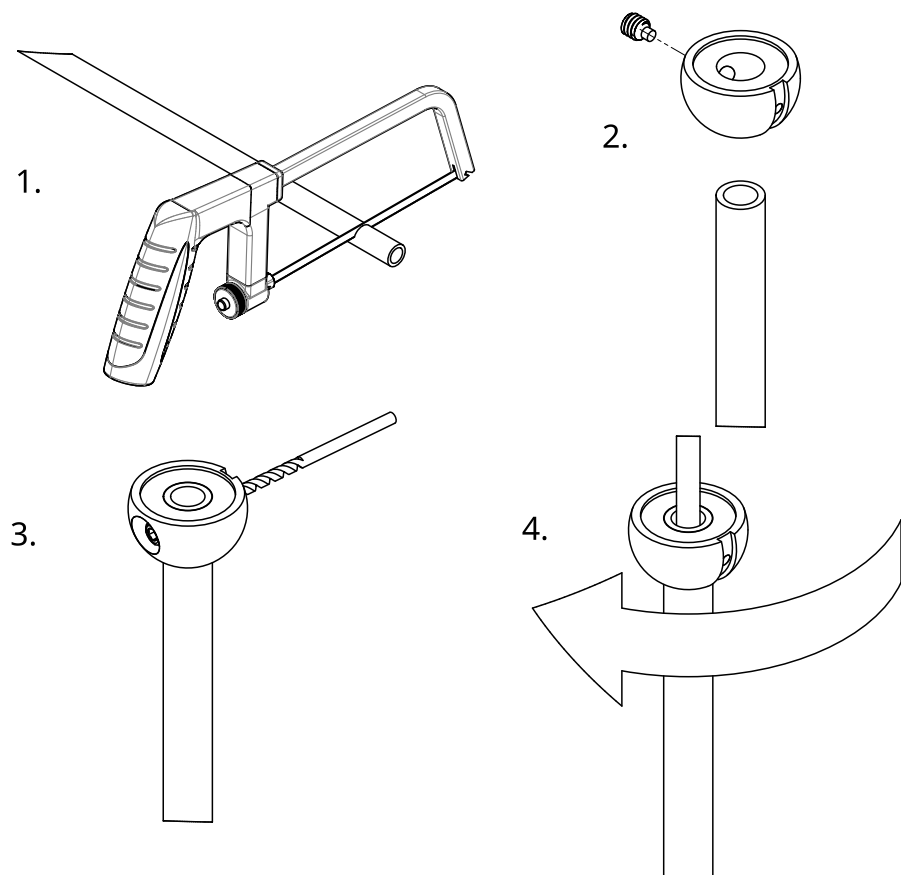
© RBW Studio LLC, 2013, 2020



Item	Qty	Part number	Description
1	1	11498-PC20	5" Round Canopy w/1.180" CH
2	1	11543	Mono Point Base Crossbar
3	1	11542	Mono Point Crossbar Center Plate
4	1	11541-PC20	1/4"IPS Adjustable Half Ball
5	1	11538	Mono Point Retaining Clip
6	1	11537	7/8" Hole Bushing
7	2	11544	#6 & #8 Magnet
8	1	11539	1/4"-20 Long Allen Hex Head Pin
9	1	91735A339	Pan head machine screw #8-32 x 0.1875 Stainless Steel 316
10	2	90273A144	Flat countersunk head (82) machine screw #6-32 x 0.25 Stainless Steel
11	1	90375A009	Type B external tooth lock washer #8 Stainless Steel 316
12	1	92597A200	8-32 Thread, 3/8" Long Electrical Grounding Screw Green-Dyed Zinc-Plated Steel

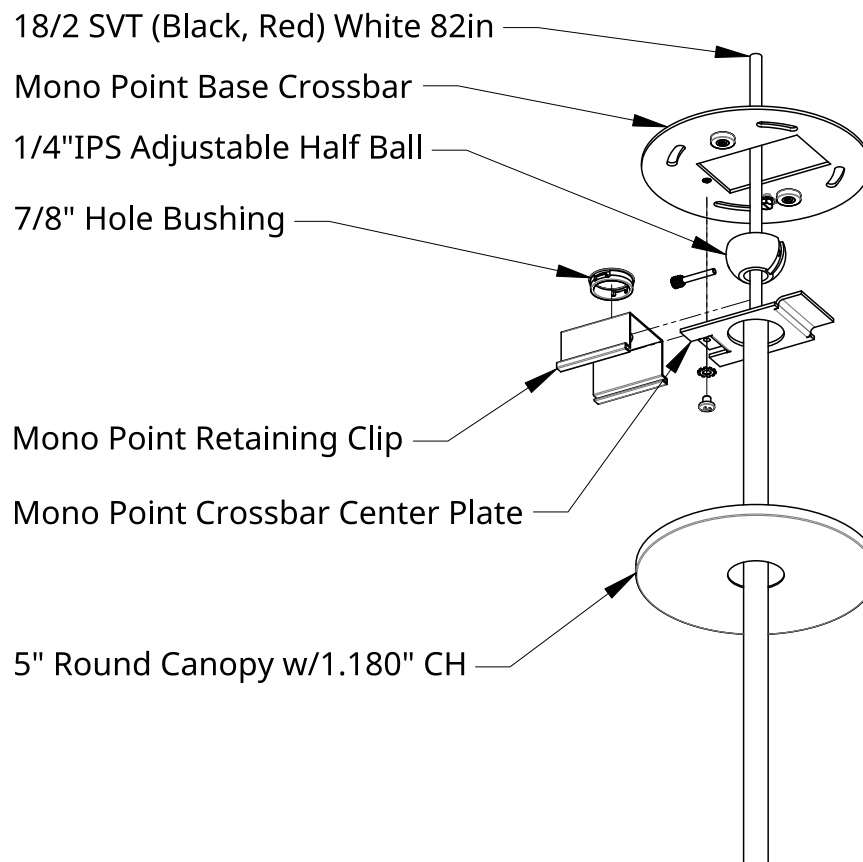
* Optional: IF adjusting drop height is desired

Remove wires from Stem before cutting.



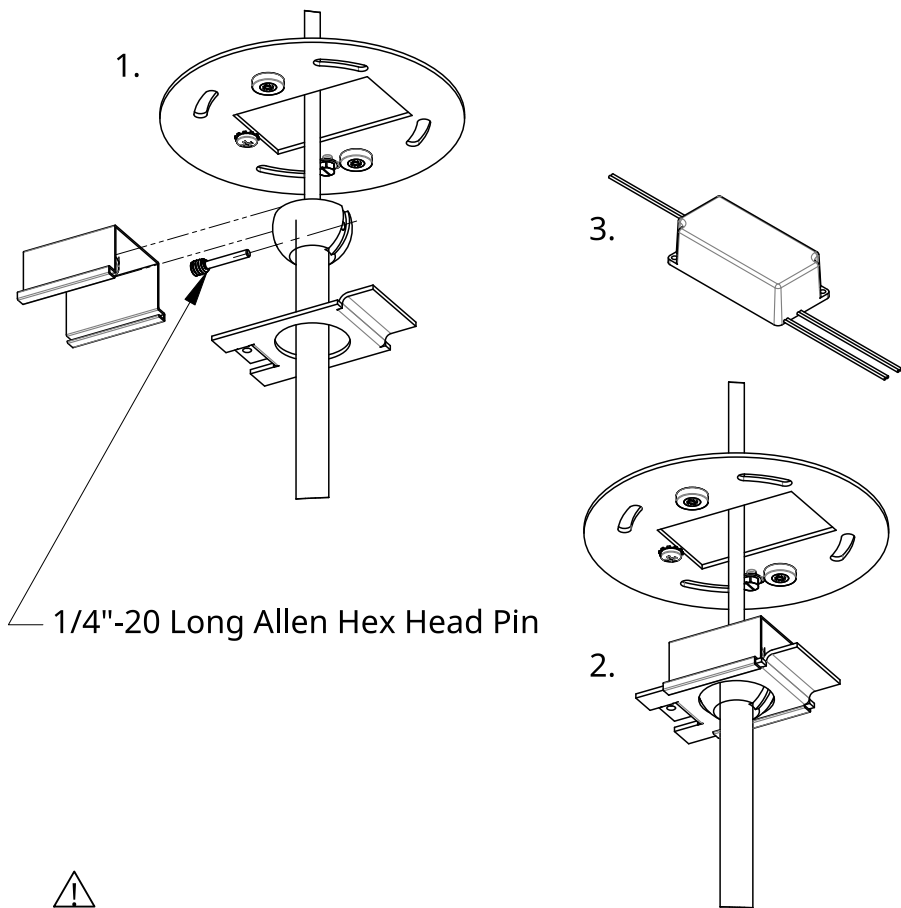
Installation - Stem Adjustment

1. Cut Stem to desired length with an appropriate tool and deburr inside edge.
2. Insert the Stem into the Half-Ball and secure it with the short included set screw.
3. Drill a 1/8" hole through the hole in the side of the Half-Ball opposite the set screw.
4. Loosen the set screw and rotate Half-Ball 180 degrees.
5. Tighten set screw once it is centered on the hole in the Stem.
6. Drill second hole in Stem.



Installation - Adjustable Canopy

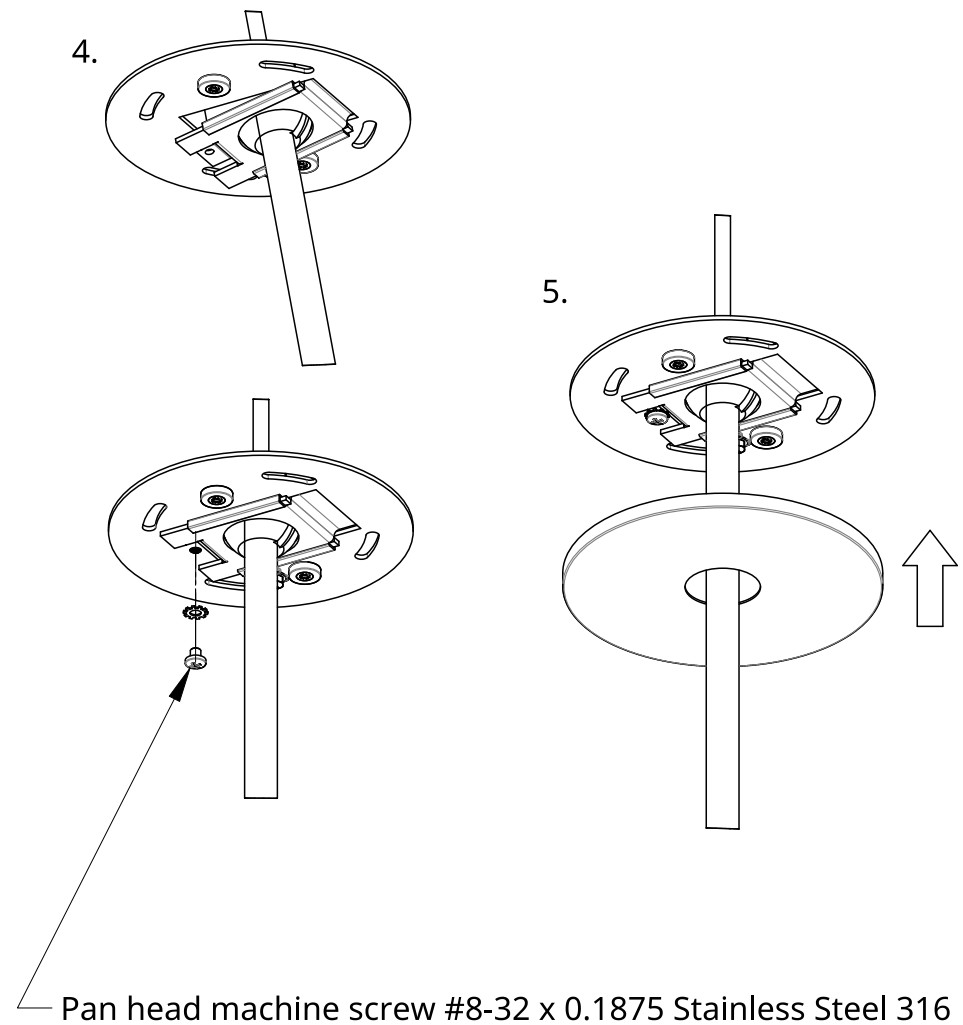
1. Mount Mono Point Base Crossbar to mounting surface with appropriate fasteners.
2. Pull out leads from module 6" longer than Stem.
3. Place Round Canopy over Stem and gently guide it down to rest on Shade.
4. Place Crossbar Center Plate and Half Ball onto Stem.



Driver dimensions and location may vary, consult your order confirmation for details.

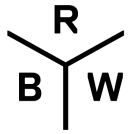
Installation - Adjustable Canopy

1. Secure the Stem to the Half Ball by threading included Allen Hex Head Pin through the drilled hole in Stem.
2. Snap Hole Bushing into Retaining Clip and slide onto Center Plate.
3. Connect Red (+) and Black (-) leads to low voltage leads from externally located driver.



Installation - Adjustable Canopy

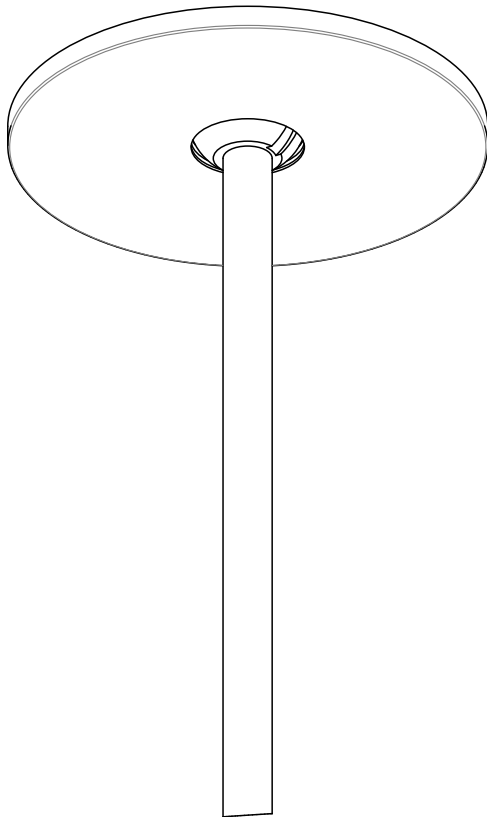
4. Hinge Center Plate as shown above, align tapped screw holes and secure with 8-32" Screw and Lock Washer.
5. Slide Round Canopy up to magnets on Mono Point Base Crossbar.
6. Congratulations! End of guide.



Flat Canopy

13073 rB

Round
Adjustable Stem



CAUTION:

Before starting, turn off power
at main circuit panel.

ADVERTENCIA:

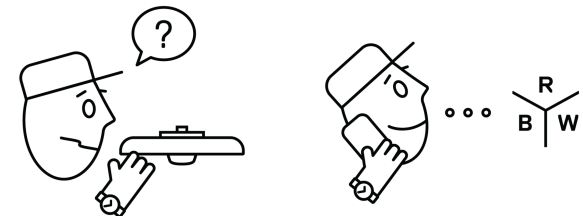
Antes de comenzar la instalación,
apague la corriente en el tablero
principal.

ATTENTION:

Coupez l'alimentation avant de
procéder à l'installation.



Calling for backup? Scan above
to contact our team.

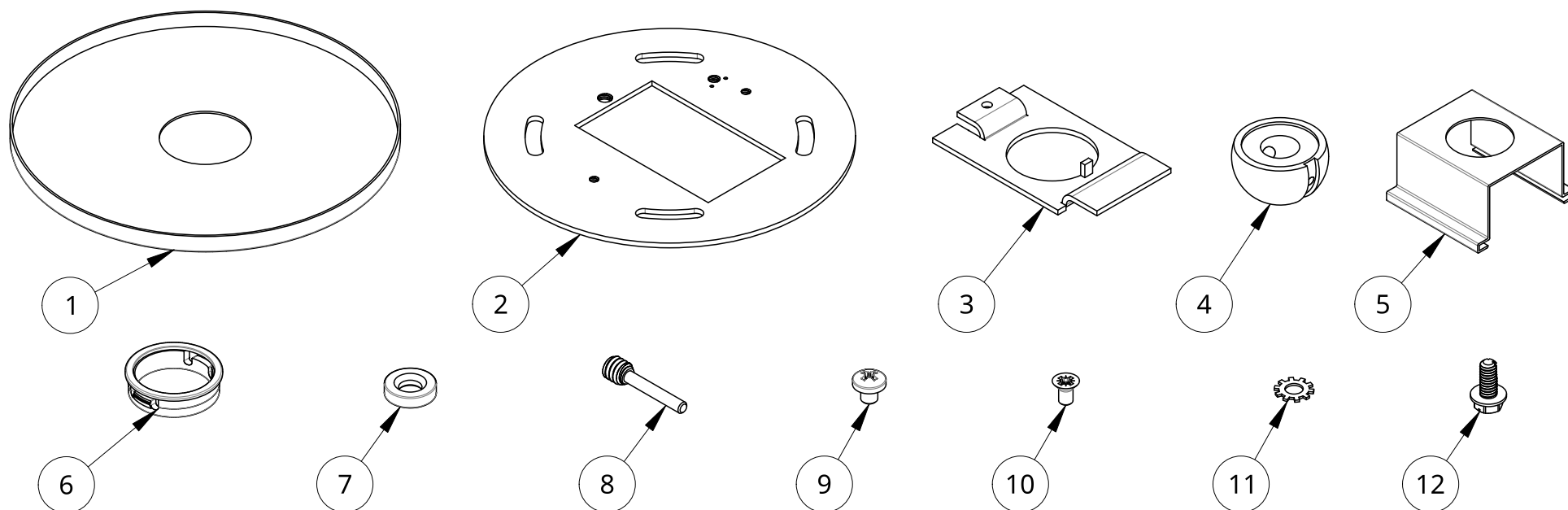


www.RBW.com

+1 212 388 1621

support@RBW.com

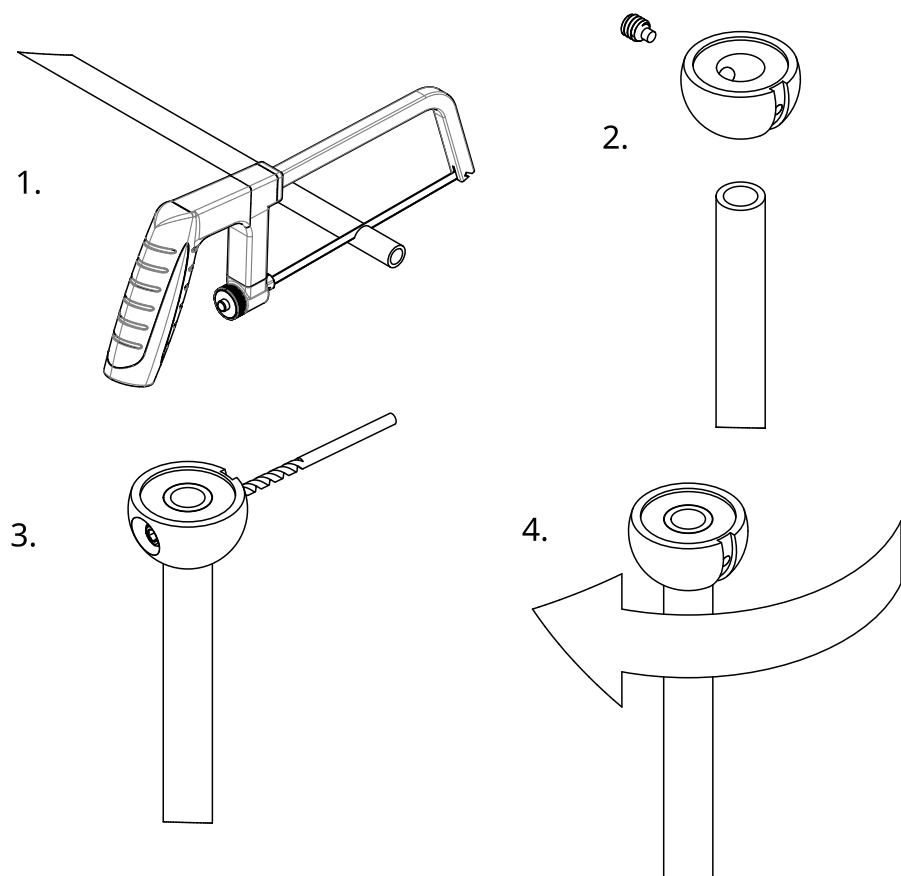
© RBW Studio LLC, 2013, 2020



Item	Qty	Part number	Description
1	1	11498-PC20	5" Round Canopy w/1.180" CH
2	1	11543	Mono Point Base Crossbar
3	1	11542	Mono Point Crossbar Center Plate
4	1	11541-PC20	1/4"IPS Adjustable Half Ball
5	1	11538	Mono Point Retaining Clip
6	1	11537	7/8" Hole Bushing
7	2	11544	#6 & #8 Magnet
8	1	11539	1/4"-20 Long Allen Hex Head Pin
9	1		Pan head machine screw #8-32 x 0.1875 Stainless Steel 316
10	2	90273A144	Flat countersunk head (82) machine screw #6-32 x 0.25 Stainless Steel
11	1		Type B external tooth lock washer #8 Stainless Steel 316
12	1	92597A200	8-32 Thread, 3/8" Long Electrical Grounding Screw Green-Dyed Zinc-Plated Steel

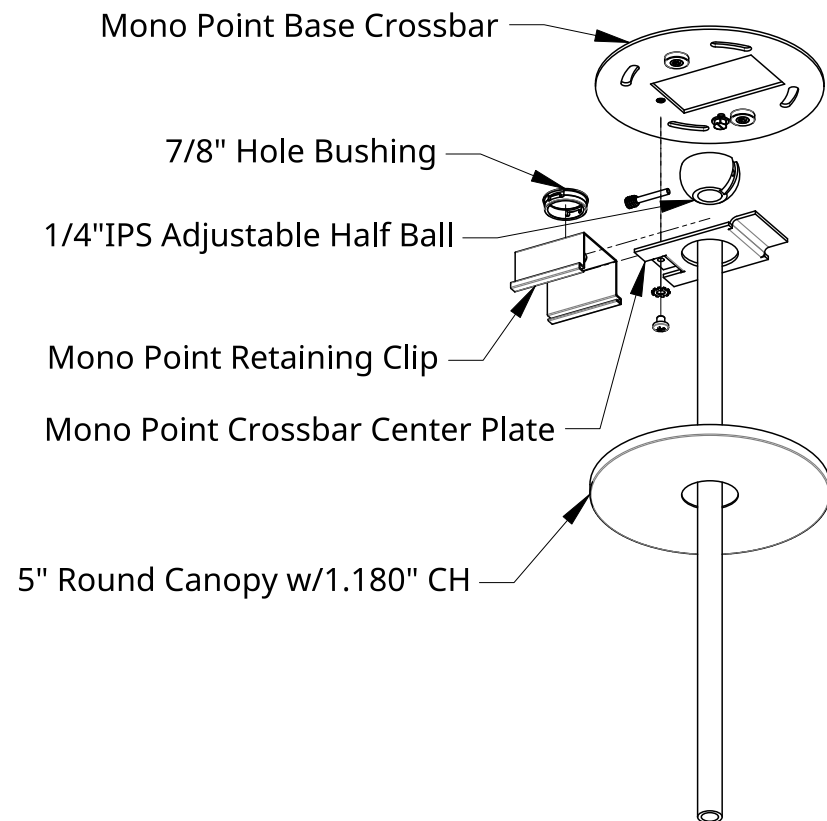
* Optional: IF adjusting drop height is desired

Remove wires from Stem before cutting.



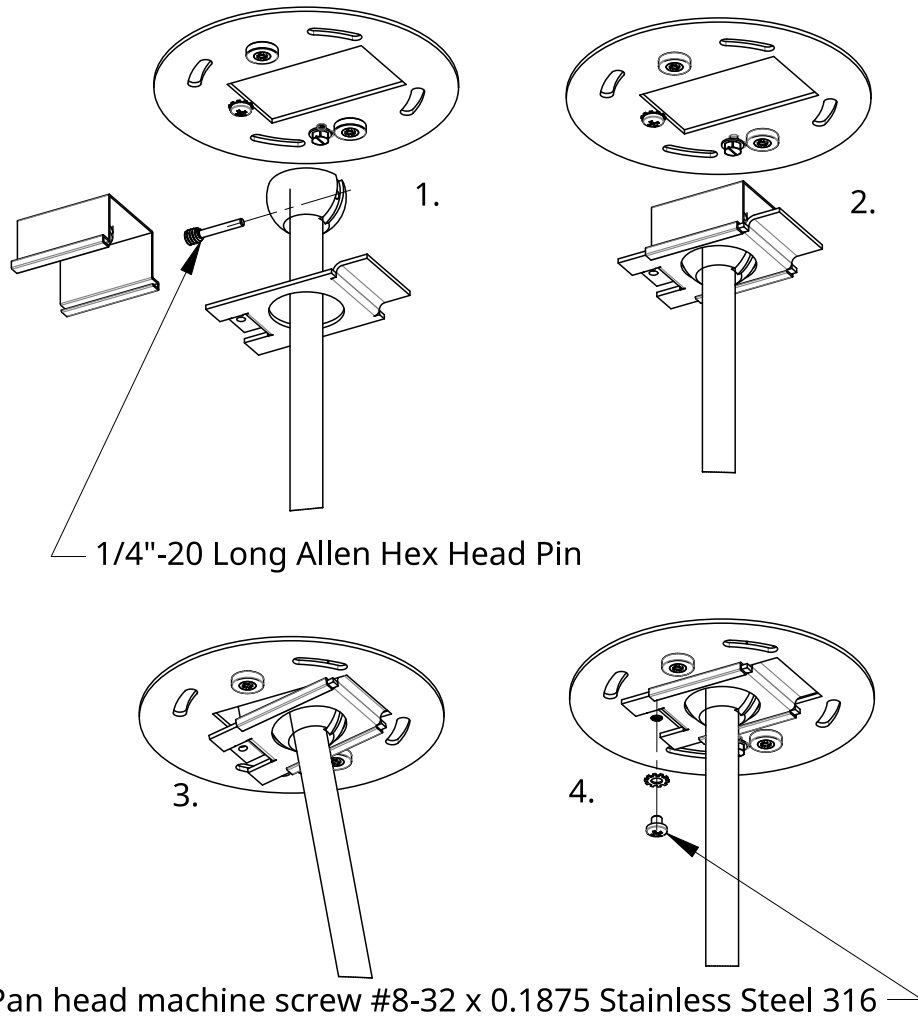
Installation - Stem Adjustment

1. Cut Stem to desired length with an appropriate tool and deburr inside edge.
2. Insert the Stem into the Half-Ball and secure it with the short included set screw.
3. Drill a 1/8" hole through the hole in the side of the Half-Ball opposite the set screw.
4. Loosen the set screw and rotate Half-Ball 180 degrees.
5. Tighten set screw once it is centered on the hole in the Stem.
6. Drill second hole in Stem.



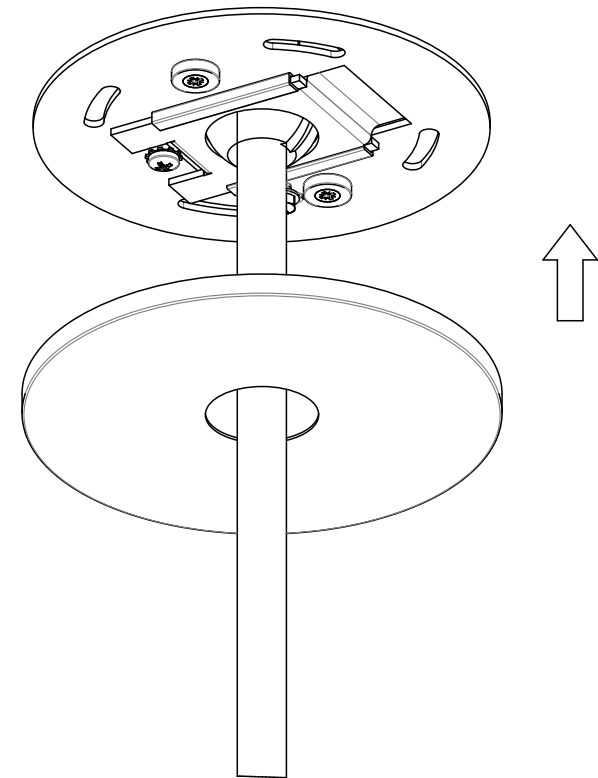
Installation - Adjustable Canopy

1. Mount Mono Point Base Crossbar to mounting surface with appropriate fasteners.
2. Pull out leads from module 6" longer than Stem.
3. Place Round Canopy over Stem and gently guide it down to rest on Shade.
4. Place Crossbar Center Plate and Half Ball onto Stem.



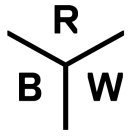
Installation - Adjustable Canopy

1. Secure the Stem to the Half Ball by threading included Allen Hex Head Pin through the drilled hole in Stem.
2. Snap Hole Bushing into Retaining Clip and slide onto Center Plate.
3. Hinge Center Plate as shown above, align tapped screw holes and secure with 8-32" Screw and Lock Washer.



Installation - Adjustable Canopy

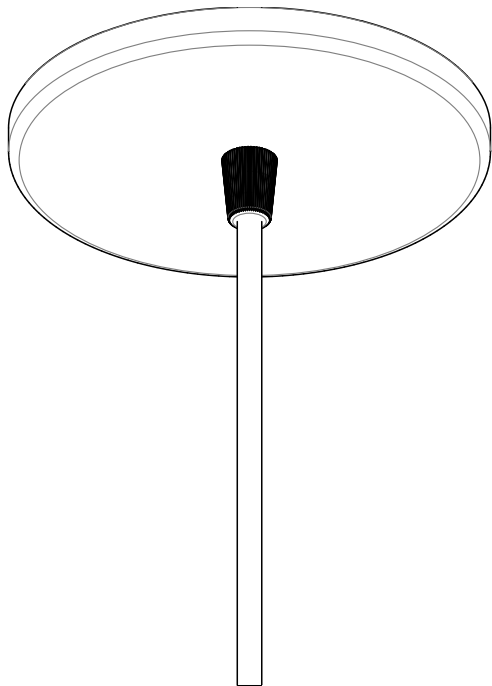
4. Slide Round Canopy up to magnets on Mono Point Base Crossbar.
5. Congratulations! End of guide.



Flat Canopy

15675 rA

Round
Cord Suspension



CAUTION:

Before starting, turn off power
at main circuit panel.

ADVERTENCIA:

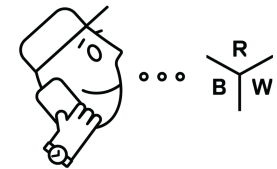
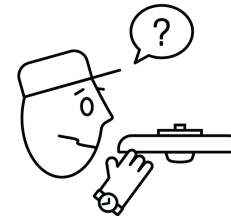
Antes de comenzar la instalación,
apague la corriente en el tablero
principal.

ATTENTION:

Coupez l'alimentation avant de
procéder à l'installation.



Calling for backup? Scan above
to contact our team.

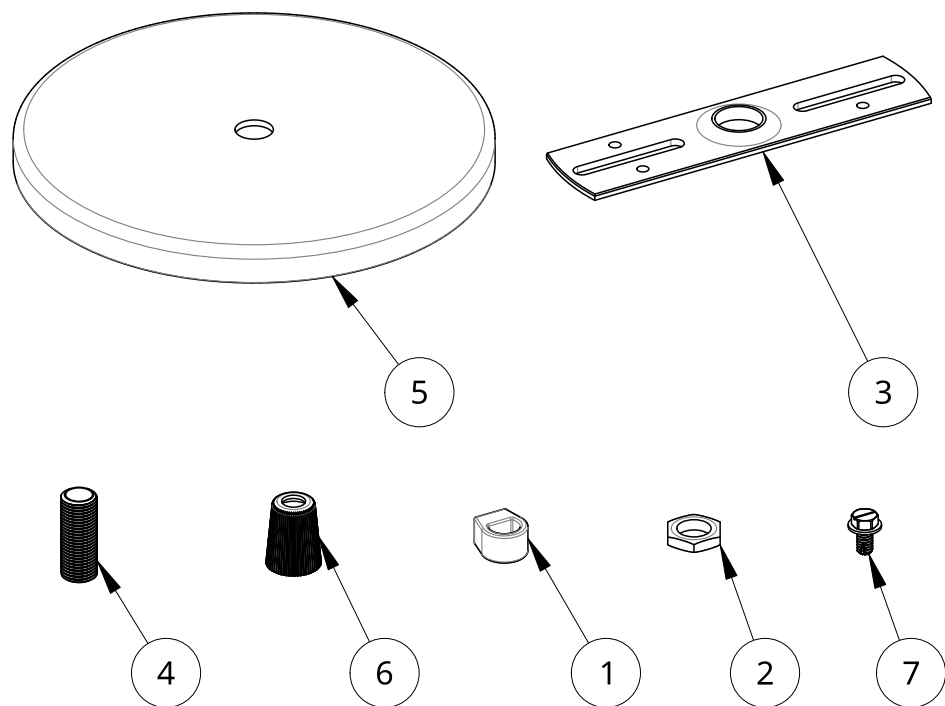


www.RBW.com

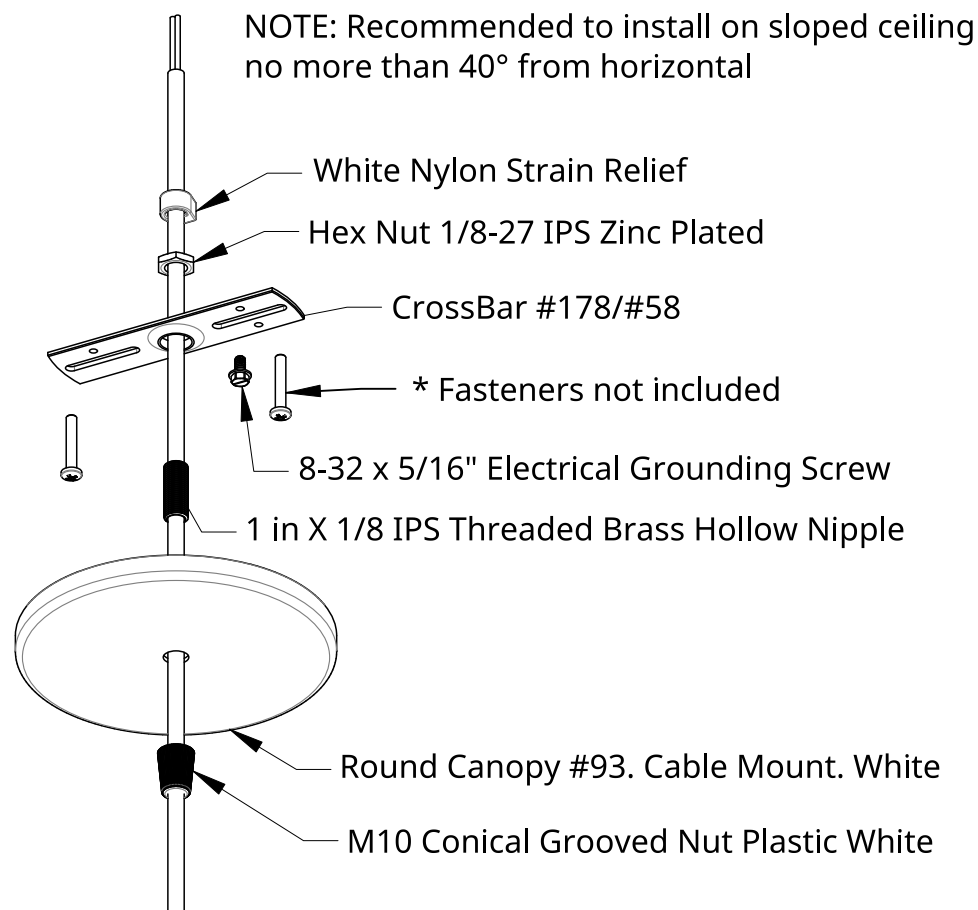
+1 212 388 0399

support@RBW.com

© RBW Studio LLC, 2013, 2020



Item	Qty	Part number	Description
1	1	BG505W	White Nylon Strain Relief
2	1	10869	Hex Nut 1/8-27 IPS Zinc Plated
3	1	10782	CrossBar #178/#58
4	1	11226	1 in X 1/8 IPS Threaded Brass Hollow Nipple
5	1	10881-PC20	Round Canopy #93. Cable Mount. White
6	1	STE5905A	M10 Conical Grooved Nut Plastic White
7	1	92597A800	8-32 x 5/16" Electrical Grounding Screw



Installation - Flat Round Canopy

1. Thread Brass Nipple through the Crossbar and thread Hex Nut onto Brass Nipple.
2. Slide the Conical Nut, Round Canopy, Nipple, Crossbar, Hex Nut and Strain Relief over Power Cord.
3. Fasten Strain Relief at desired hang height by tightening the set screw.
4. Fasten Crossbar to the junction box.
5. Trim and strip excess power cord.
6. Connect to power feed.
7. Raise Round Canopy and thread Conical Nut onto 1/8 IPS Nipple.
8. Congratulations! End of guide.